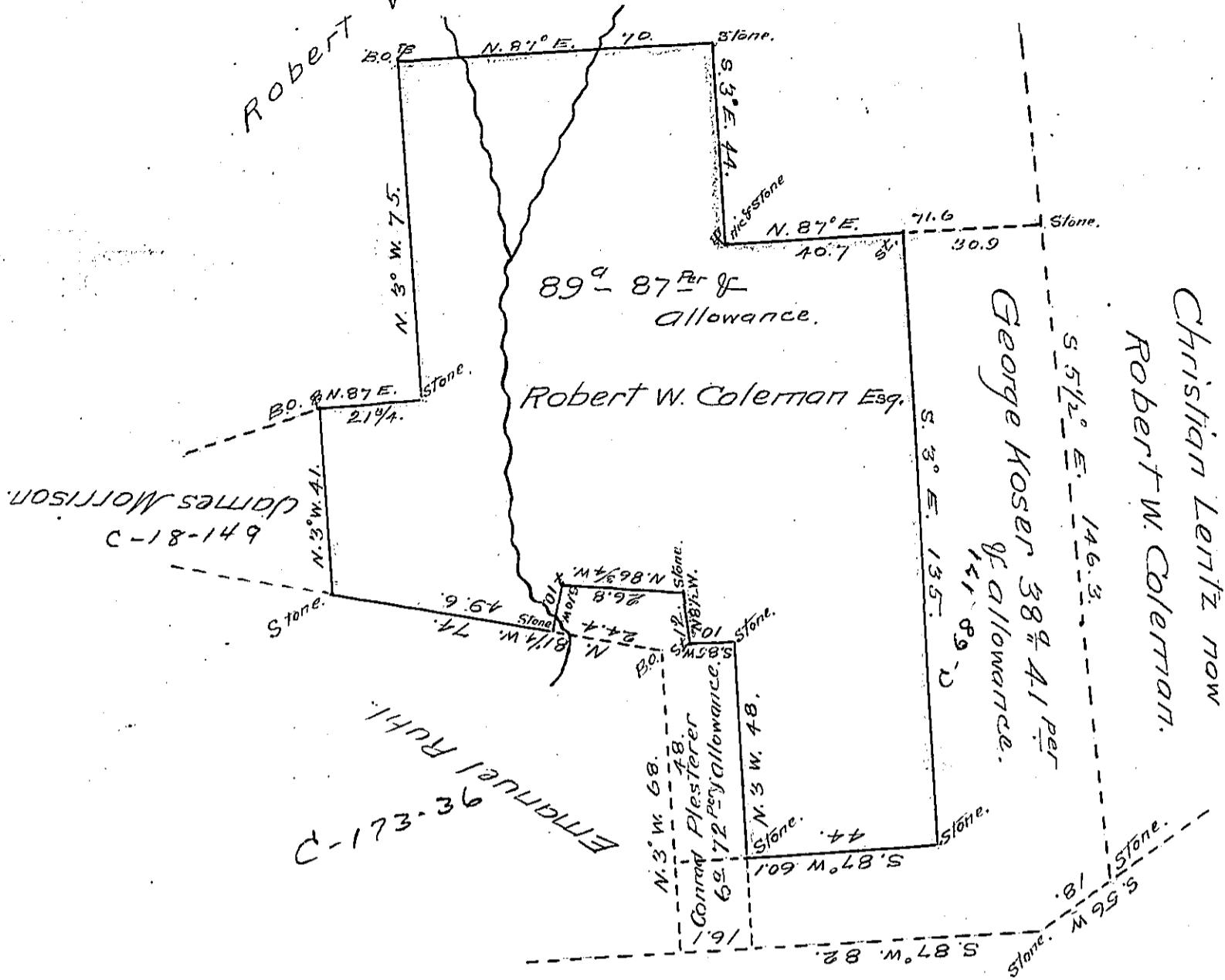


C. 68-171  
Coleman.

ROBERT W.



Christian Lertz now  
Robert W. Coleman.

George Koser 38 1/2 41 per  
allowance.

Conrad Plesterer  
69 1/2 per allowance.

George Zahm

A Draught of a Tract of Land, situate in Warwick Township in the County of Lancaster, Containing within the Yellow lines Eighty nine acres and Eighty Seven perches, and the usual allowance, of Six per Cent for Roads & Highways and the whole (Including the dotted lines) Containing one hundred and thirty four acres and forty perches and the usual allowance of Six per Cent for Roads &c. Surveyed, the 11<sup>th</sup> day of March 1850. In Pursuance of a warrant dated the 19<sup>th</sup> day of June 1751. Granted to Henry Plaisterer, One hundred Acres and the usual allowance. (Surveyed for Robert Coleman) Surveyed by Jacob Weidle by my directions  
 To John Laporte Esq } Jacob Redsecker D.S.  
 Surveyor General }

IN TESTIMONY that the above is a copy of the original remaining on file in the Department of Internal Affairs of Pennsylvania, made conformably to an Act of Assembly approved the 16th day of February, 1833, I have hereunto set my Hand and caused the Seal of said Department to be affixed at Harrisburg, this Twenty ninth day of May 1906

*James R. [Signature]*  
 Secretary of Internal Affairs.